

巩义市强宏镁业科技有限责任公司
巩义市康店焦湾工业园

以下测试之样品是由申请者所提供及确认: 氢氧化镁

SGS 工作编号 : GC091105110
测试样品信息 : 货号/批号: 2009
样品接收日期 : 2009 年 11 月 6 日
测试周期 : 2009 年 11 月 6 日 - 2009 年 11 月 11 日

测试要求 : 根据客户要求测试

测试方法 : 请参见下一页

测试结果 : 请参见下一页

测试结论 : 基于所送样品进行的测试, 测试结果与欧盟 RoHS 指令 2002/95/EC 以及后续修正指令的要求**相符**。

通标标准技术服务有限公司
授权签名



Manson Yang 杨跃飞
高级工程师

备注: 根据客户申请, SGS 出具了此中文报告, 英文版本可根据客户要求提供。(The Chinese test report is issued according to the applicant's request. The English version is available from SGS if further needed)

This document is issued by the Company under its General Conditions of Service printed overleaf or available on request and accessible at http://www.sgs.com/terms_and_conditions.htm. Attention is drawn to the limitation of liability, indemnification and jurisdiction issues defined therein. Any holder of this document is advised that information contained hereon reflects the Company's findings at the time of its intervention only and within the limits of Client's instructions, if any. The Company's sole responsibility is to its Client and this document does not generate parties to a transaction from exercising all their rights and obligations under the transaction documents. Any unauthorized alteration, forgery or falsification of the content or appearance of this document is unlawful and offenders may be prosecuted to the fullest extent of the law.
Unless otherwise stated, the results shown in this test report refer only to the sample(s) tested. This document cannot be reproduced except in full, without prior approval of the Company.



SGS (Shanghai) Standards Technical Services Co., Ltd.
Guangzhou Industrial Chemical Laboratory

138 Kazhu Road, Sointech Park, Guangzhou Economic & Technology Development District, Guangzhou, China 510663 | (86-20) 82155555 | (86-20) 82075125 | www.cn.sgs.com
中国·广州·经济技术开发区科学城科珠路198号 邮编: 510663 | (86-20) 82155555 | (86-20) 82075125 | e: sgs.china@sgs.com

测试结果:

样本 1 描述: 白色粉末

RoHS 指令 2002/95/EC

测试项目	单位	测试方法 (参考)	测试结果	MDL	限值
镉 (Cd)	毫克/千克	IEC 62321: 2008, ICP-OES	N.D.	2	100
铅 (Pb)	毫克/千克	IEC 62321: 2008, ICP-OES	N.D.	2	1000
汞 (Hg)	毫克/千克	IEC 62321: 2008, ICP-OES	N.D.	2	1000
碱性溶液萃取测六价铬 (CrVI)	毫克/千克	IEC 62321: 2008, UV-Vis	N.D.	2	1000
多溴联苯(PBBs)之和	毫克/千克	-	N.D.	-	1000
单溴联苯	毫克/千克	IEC 62321: 2008, GC-MS	N.D.	5	
二溴联苯	毫克/千克	IEC 62321: 2008, GC-MS	N.D.	5	
三溴联苯	毫克/千克	IEC 62321: 2008, GC-MS	N.D.	5	
四溴联苯	毫克/千克	IEC 62321: 2008, GC-MS	N.D.	5	
五溴联苯	毫克/千克	IEC 62321: 2008, GC-MS	N.D.	5	
六溴联苯	毫克/千克	IEC 62321: 2008, GC-MS	N.D.	5	
七溴联苯	毫克/千克	IEC 62321: 2008, GC-MS	N.D.	5	
八溴联苯	毫克/千克	IEC 62321: 2008, GC-MS	N.D.	5	
九溴联苯	毫克/千克	IEC 62321: 2008, GC-MS	N.D.	5	
十溴联苯	毫克/千克	IEC 62321: 2008, GC-MS	N.D.	5	
多溴二苯醚(PBDEs)之和	毫克/千克	-	N.D.	-	1000
单溴二苯醚	毫克/千克	IEC 62321: 2008, GC-MS	N.D.	5	
二溴二苯醚	毫克/千克	IEC 62321: 2008, GC-MS	N.D.	5	
三溴二苯醚	毫克/千克	IEC 62321: 2008, GC-MS	N.D.	5	
四溴二苯醚	毫克/千克	IEC 62321: 2008, GC-MS	N.D.	5	
五溴二苯醚	毫克/千克	IEC 62321: 2008, GC-MS	N.D.	5	
六溴二苯醚	毫克/千克	IEC 62321: 2008, GC-MS	N.D.	5	
七溴二苯醚	毫克/千克	IEC 62321: 2008, GC-MS	N.D.	5	
八溴二苯醚	毫克/千克	IEC 62321: 2008, GC-MS	N.D.	5	
九溴二苯醚	毫克/千克	IEC 62321: 2008, GC-MS	N.D.	5	
十溴二苯醚	毫克/千克	IEC 62321: 2008, GC-MS	N.D.	5	

注释:

1. 毫克/千克 = ppm
2. N.D. = 未检出 (< MDL)
3. MDL = 方法检测限
4. "-" = 未规定
5. 多溴二苯醚 = 多溴联苯醚

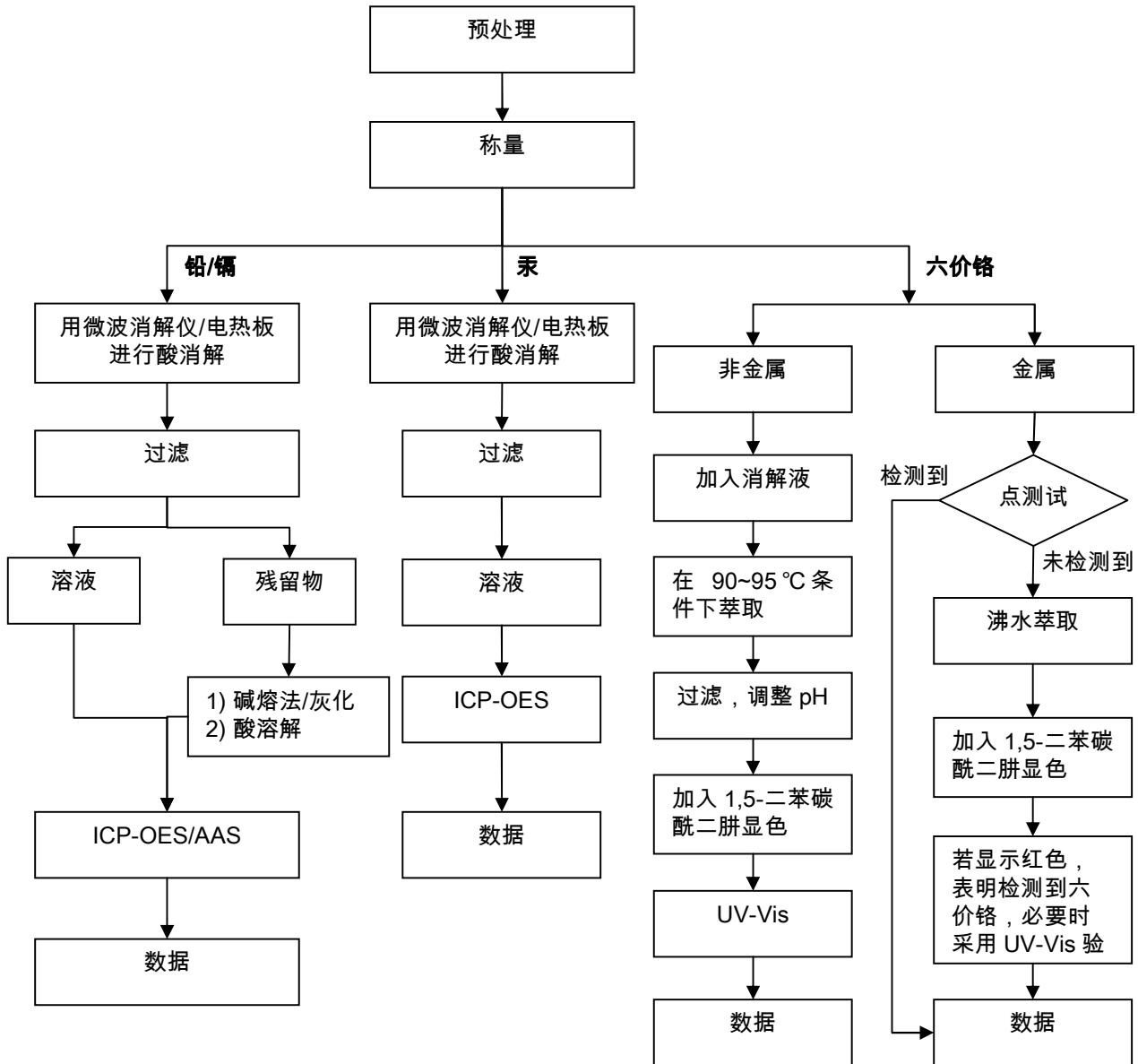
This document is issued by the Company under its General Conditions of Service printed overleaf or available on request and accessible at http://www.sgs.com/terms_and_conditions.htm. Attention is drawn to the limitation of liability, indemnification and jurisdiction issues defined therein. Any holder of this document is advised that information contained hereon reflects the Company's findings at the time of its intervention only and within the limits of Client's instructions, if any. The Company's sole responsibility is to its Client and this document does not generate parties to a transaction from exercising all their rights and obligations under the transaction documents. Any unauthorized alteration, forgery or falsification of the content or appearance of this document is unlawful and offenders may be prosecuted to the fullest extent of the law. Unless otherwise stated, the results shown in this test report refer only to the sample(s) tested. This document cannot be reproduced except in full, without prior approval of the Company.



附件

测试流程图

- 1) 分析人员: 汪丹 / 李莉莉
- 2) 项目负责人: 余奕东 / 王宏磊
- 3) 样品按照下述流程被完全消解 (六价铬除外)。

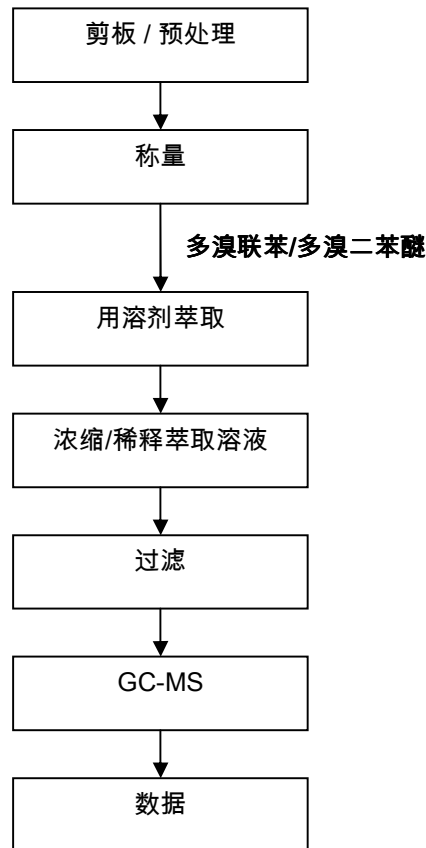


This document is issued by the Company under its General Conditions of Service printed overleaf or available on request and accessible at http://www.sgs.com/terms_and_conditions.htm. Attention is drawn to the limitation of liability, indemnification and jurisdiction issues defined therein. Any holder of this document is advised that information contained hereon reflects the Company's findings at the time of its intervention only and within the limits of Client's instructions, if any. The Company's sole responsibility is to its Client and this document does not generate parties to a transaction from exercising all their rights and obligations under the transaction documents. Any unauthorized alteration, forgery or falsification of the content or appearance of this document is unlawful and offenders may be prosecuted to the fullest extent of the law. Unless otherwise stated, the results shown in this test report refer only to the sample(s) tested. This document cannot be reproduced except in full, without prior approval of the Company.



测试流程图

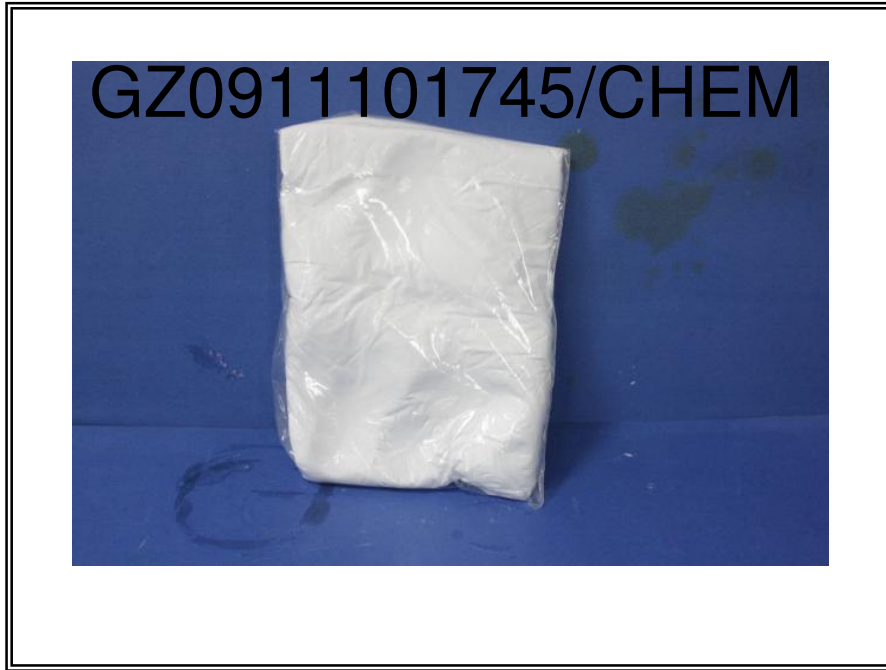
- 1) 分析人员: 赵瑞娜
- 2) 项目负责人: 杨伟兴



This document is issued by the Company under its General Conditions of Service printed overleaf or available on request and accessible at http://www.sgs.com/terms_and_conditions.htm. Attention is drawn to the limitation of liability, indemnification and jurisdiction issues defined therein. Any holder of this document is advised that information contained hereon reflects the Company's findings at the time of its intervention only and within the limits of Client's instructions, if any. The Company's sole responsibility is to its Client and this document does not generate parties to a transaction from exercising all their rights and obligations under the transaction documents. Any unauthorized alteration, forgery or falsification of the content or appearance of this document is unlawful and offenders may be prosecuted to the fullest extent of the law.



样品照片:



此图片仅限于随 SGS 正本报告使用

*** 报告完 ***

This document is issued by the Company under its General Conditions of Service printed overleaf or available on request and accessible at http://www.sgs.com/terms_and_conditions.htm. Attention is drawn to the limitation of liability, indemnification and jurisdiction issues defined therein. Any holder of this document is advised that information contained hereon reflects the Company's findings at the time of its intervention only and within the limits of Client's instructions, if any. The Company's sole responsibility is to its Client and this document does not generate parties to a transaction from exercising all their rights and obligations under the transaction documents. Any unauthorized alteration, forgery or falsification of the content or appearance of this document is unlawful and offenders may be prosecuted to the fullest extent of the law.

Unless otherwise stated, the results shown in this test report refer only to the sample(s) tested. This document cannot be reproduced except in full, without prior approval of the Company.

